

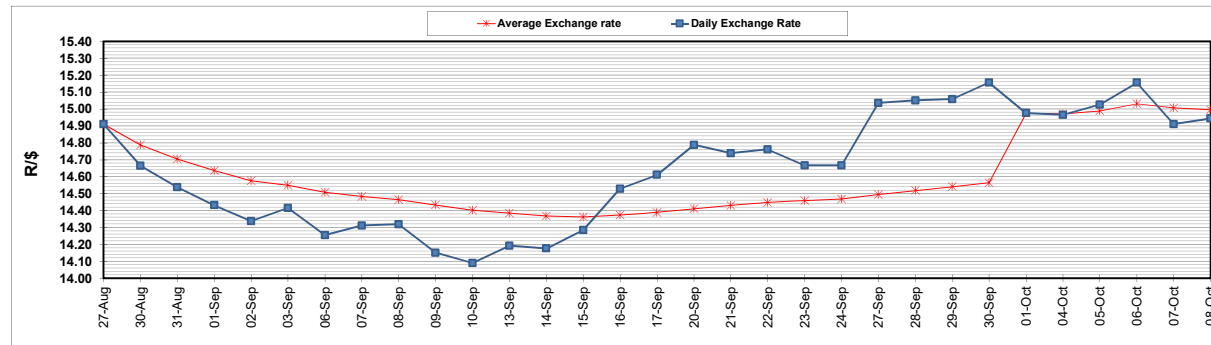
	PETROL 95 ULP	PETROL 93 ULP & LRP	DIESEL 0.05%	DIESEL 0.005%	ILL. PAR.
GAUTENG PUMP PRICE (SA c/l) AS FROM 06/10/2021	1,833.000	1,811.000	-	-	-
WHOLESALE PRICE (SA c/l) AS FROM 06/10/2021	-	-	1,571.780	1,575.180	980.488
SINGLE NATIONAL MAXIMUM RETAIL PRICE	-	-	-	-	1,240.000
BASIC FUEL PRICE - 08/10/2021 (SA c/l)	924.879	913.310	916.561	920.417	909.789
PRESS RELEASE CONTRIBUTION TO BFP 06/10/2021 - 08/10/2021 (SA c/l)	818.310	806.310	771.630	775.030	767.128
UNIT OVER/(UNDER) RECOVERY - 08/10/2021 (SA c/l)	(106.569)	(107.000)	(144.931)	(145.387)	(142.661)
AVERAGE BASIC FUEL PRICE 01/10/2021 - 08/10/2021	904.652	890.663	892.510	895.999	889.304
AVERAGE UNIT OVER/(UNDER) RECOVERY 01/10/2021 - 08/10/2021	(86.942)	(83.453)	(133.380)	(133.469)	(138.176)

ANALYSIS MOVEMENT OF AVERAGE OVER/(UNDER) RECOVERY

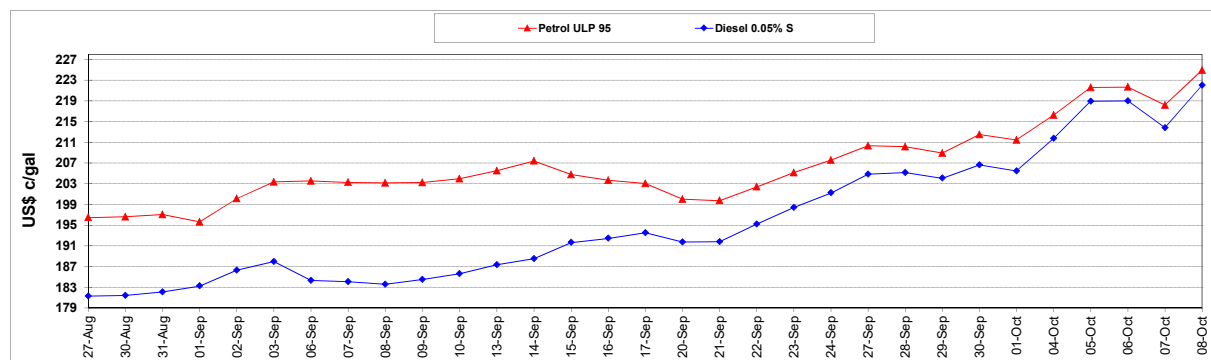
	PETROL 95	PETROL 93	DIESEL 0.05%	DIESEL 0.005%	ILL. PAR.
- MOVEMENT IN INTERNATIONAL PRODUCT PRICES	(60.954)	(57.867)	(107.741)	(107.729)	(112.629)
- MOVEMENT IN EXCHANGE RATE	(25.988)	(25.586)	(25.639)	(25.740)	(25.547)
AVERAGE UNIT OVER/(UNDER) RECOVERY 01/10/2021 - 08/10/2021	(86.942)	(83.453)	(133.380)	(133.469)	(138.176)

R/\$ EXCHANGE RATE - (R/\$14.9438 - 08/10/2021)

EXCHANGE RATE USED IN BASIC FUEL PRICE



INTERNATIONAL PRODUCT PRICES OF BASKET USED IN BASIC FUEL PRICE



BASIC FUEL PRICE IN SA CENTS PER LITRE

